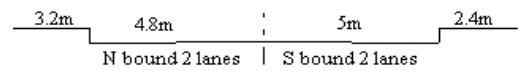


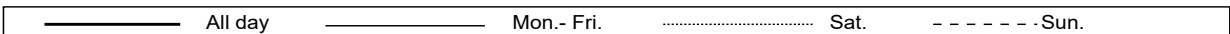
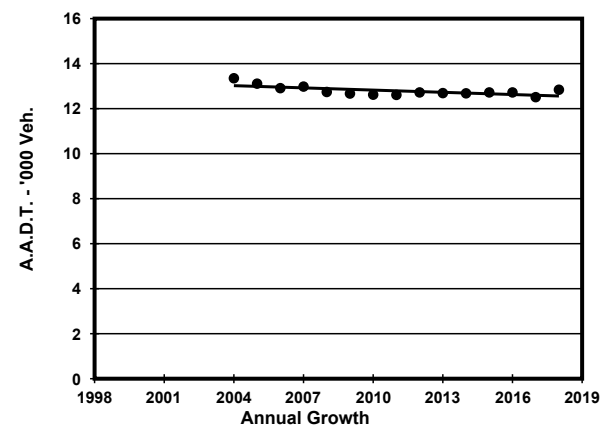
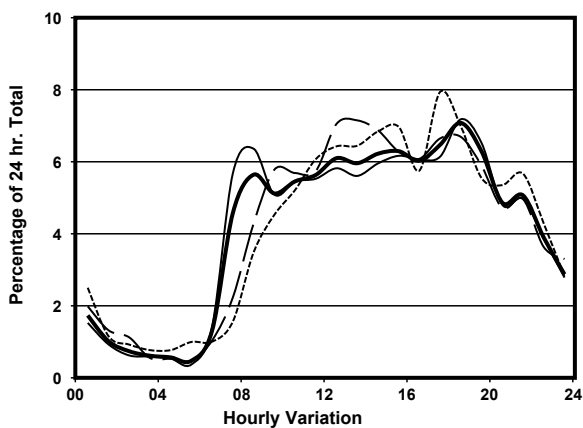
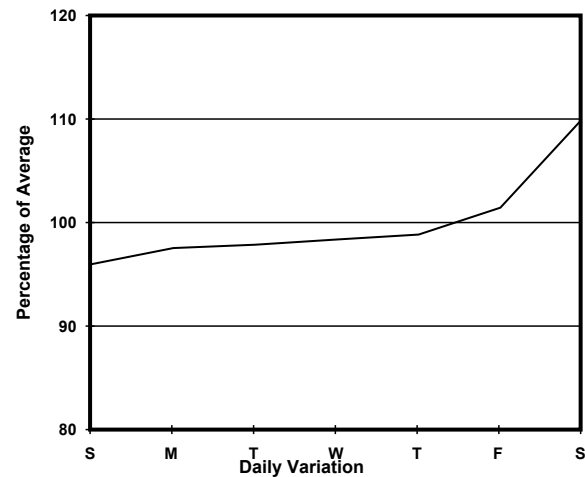
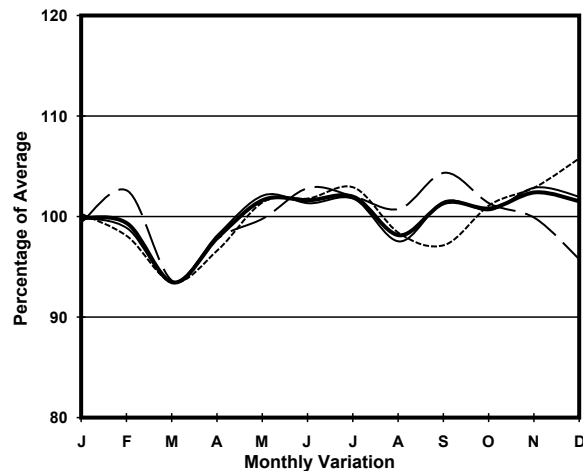
YEAR

2018

LINK TAT CHEE AVE (from BEGONIA RD to CORNWALL ST)

CORE STATION  
ROAD NETWORK  
ROAD TYPE3106  
MINOR  
LOCAL DISTRIBUTOR

## 1. TRAFFIC FLOW VARIATION AND GROWTH



## 2. TRAFFIC CHARACTERISTICS (BY DIRECTION)

| Parameter                            | All - Day | Mon. - Fri. | Sat.      | Sun.      |
|--------------------------------------|-----------|-------------|-----------|-----------|
| <b>SOUTH BOUND</b>                   |           |             |           |           |
| A.A.D.T.                             | 6810      | 6710        | 7730      | 6470      |
| R 12 / 24 - %                        | 71.1      | 71.3        | 71.5      | 69.6      |
| R 16 / 24 - %                        | 91.2      | 91.4        | 90.9      | 90.5      |
| AM Peak Hour                         | 0900-1000 | 0800-0900   | 0900-1000 | 0900-1000 |
| One-way flow at AM peak hour         | 370       | 400         | 530       | 290       |
| T - % (AM)                           | -         | -           | -         | -         |
| PM Peak Hour                         | 1800-1900 | 1800-1900   | 1700-1800 | 1700-1800 |
| One-way flow at PM peak hour         | 500       | 510         | 550       | 560       |
| T - % (PM)                           | -         | -           | -         | -         |
| Prop.of commercial vehicles - 16 hr. | -         | -           | -         | -         |
| <b>NORTH BOUND</b>                   |           |             |           |           |
| A.A.D.T.                             | 6030      | 6010        | 6430      | 5880      |
| R 12 / 24 - %                        | 69.9      | 70.7        | 69.2      | 66.7      |
| R 16 / 24 - %                        | 90.1      | 91          | 88.2      | 87.5      |
| AM Peak Hour                         | 0800-0900 | 0800-0900   | 0900-1000 | 0900-1000 |
| One-way flow at AM peak hour         | 360       | 410         | 290       | 270       |
| T - % (AM)                           | -         | -           | -         | -         |
| PM Peak Hour                         | 1800-1900 | 1800-1900   | 1800-1900 | 1800-1900 |
| One-way flow at PM peak hour         | 410       | 400         | 430       | 470       |
| T - % (PM)                           | -         | -           | -         | -         |
| Prop.of commercial vehicles - 16 hr. | -         | -           | -         | -         |

## 3. OTHER INFORMATION AND COMMENT